

**ATTENTION:**  
GENERAL MANAGER   
PARTS MANAGER   
CLAIMS PERSONNEL   
SERVICE MANAGER

IMPORTANT - All  
Service Personnel  
Should Read and  
Initial in the boxes  
provided, right.


QUALITY DRIVEN® SERVICE



## SERVICE BULLETIN

**APPLICABILITY:** All Vehicles  
**SUBJECT:** Subaru Wheel Locks

**NUMBER:** 15-125-07  
**DATE:** 08/29/07

### INTRODUCTION

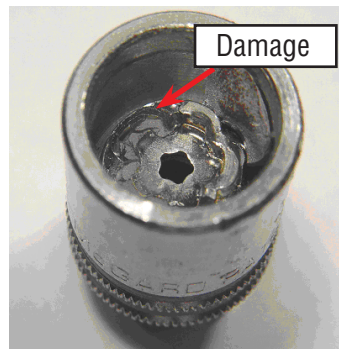
The purpose of this bulletin is to provide the proper procedure for removing and installing Subaru wheel locks. Failure to follow this procedure can cause damage to the wheel locks and/or wheels.

### REPAIR PROCEDURE/INFORMATION

- 1) Remove one lug nut from each wheel. If wheel studs are dirty, clean with a wire brush prior to installing locks. Use extreme care to prevent damage to the wheel.
- 2) By hand, install one wheel lock on each wheel.
- 3) Using the special wheel lock key and a torque wrench, tighten each wheel lock to the proper lug nut torque specification (refer to the applicable Subaru Service Manual).

**NOTE:** For ease of installation and removal, the wheel lock should always be the last lug nut tightened on each wheel and should always be the first one removed.

**WARNING:** Use of an impact wrench may cause permanent damage to the wheel lock and key.



### WARRANTY INFORMATION

Wheel locks and/or keys that are damaged due to improper installation and/or removal is not a matter for warranty.

**CAUTION: VEHICLE SERVICING PERFORMED BY UNTRAINED PERSONS COULD  
RESULT IN SERIOUS INJURY TO THOSE PERSONS OR TO OTHERS.**

Subaru Service Bulletins are intended for use by professional technicians ONLY. They are written to inform those technicians of conditions that may occur in some vehicles, or to provide information that could assist in the proper servicing of the vehicle. Properly trained technicians have the equipment, tools, safety instructions, and know-how to do the job correctly and safely. If a condition is described, DO NOT assume that this Service Bulletin applies to your vehicle, or that your vehicle will have that condition.

